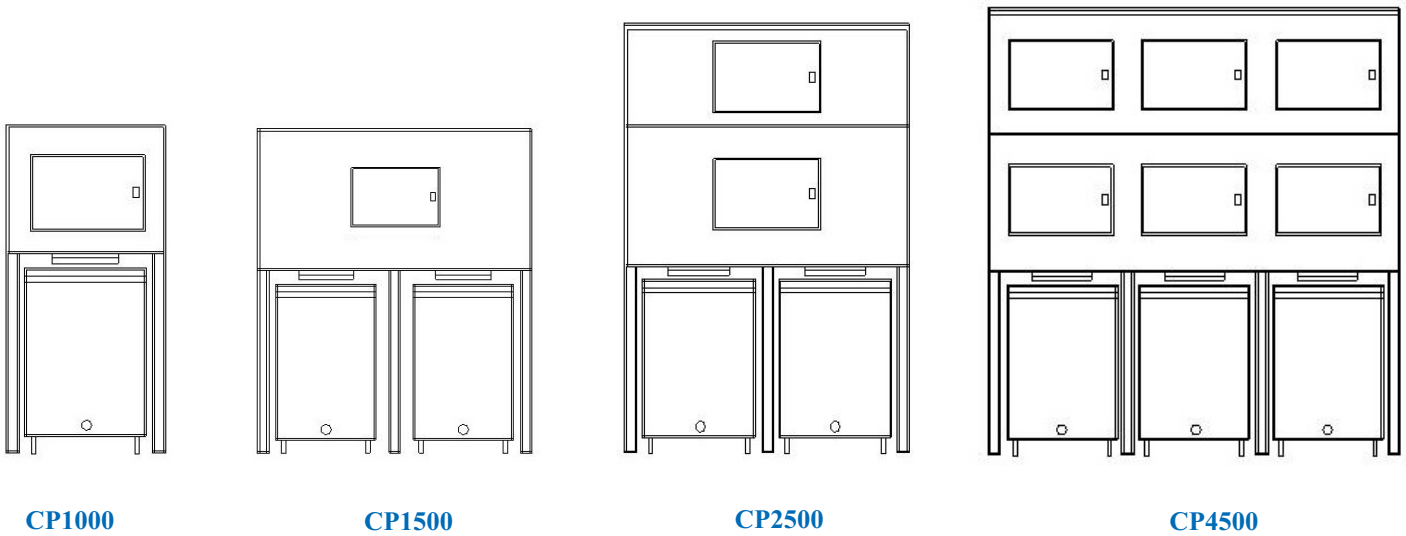


**HOWE®**



*Cool Solutions for Fresh Foods*  
Ice Storage and Transport Systems



*Only Howe gives you:*

- *Revolutionary design features*
- *Fast, clean and safe solutions for handling ice*
- *Durable construction for years of dependable use*
- *Adaptable for use with your current ice machine<sup>1</sup>*

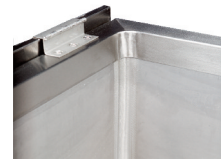
*Mobile Express® Bins*

Model Number	Dimensions						No. Of Carts	Bin Interior Liner	For Use With Howe Model Ice flakers	Shipping Weight		Estimated Total Storage Capacity	
	Inches			Centimeters						Lbs.	Kg.	Lbs.	Kg.
	W	D	H	W	D	H							
CP750*	30	48	65	76	92	165	1	Poly	1000-RLE	365	165	465	211
CP1000	30	48	82	76	122	208	1	Poly	1000-RLE, 2000-RLE	380	173	763	346
CP1500	60	36	71	153	92	181	2	Poly	2000-RLE	660	300	969	440
CP2500	60	36	92	153	92	234	2	Poly	2000-RLE, 4000-RL	935	425	1587	721
CP1850*	90	36	71	229	92	181	3	SS	4000-RL	950	432	1476	670
CP3200*	90	36	101	229	92	257	3	SS	4000-RL, 6000-RL	1310	595	2842	1290
CP4500	90	48	101	229	122	257	3	SS	6000-RL	1770	804	3655	1660

*\* Not Shown Above*

All standard Mobile Express® ice bins are constructed with stainless-steel exteriors and polyethylene or stainless-steel liners. Tops include a condensate drip pan (for RL model flakers only) and patented factory mounted ice level control boxes. The ice level controls are integrated into the ice bin top to ensure proper alignment, provide greater protection, and external access to photo eyes. Stainless-steel lined bins have an optional fully seam welded covered corner option for food grade applications.

<sup>1</sup>Virtually any brand and model ice maker. Contact Howe for availability and pricing.



*Stainless-steel cart come with stainless-steel interior liners*

*CP200H mobile cart*

*CP200H-W mobile cart*

### Howe *Mobile Express*® Carts

#### Polyethylene Carts

- Insulated polyethylene cart tops are hinged to fold down out of the way when in use. By remaining hinged to the cart, potential for cross contamination and loss of top is reduced.
- The standard polyethylene cart color is charcoal brown
- Carts are also available in white for food processing applications.
- The optional SA33ice tote kit for the polyethylene ice carts consists of six totes per cart.
- Special hinges are available to allow for removal of the top for cleaning and sanitizing.

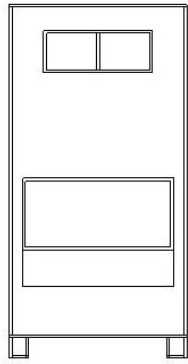
#### Stainless-Steel Carts

- Heavy-duty stainless-steel carts with stainless-steel interior liners are designed for industrial food processing applications.

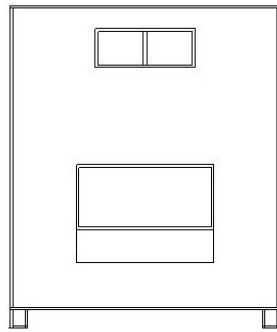


*Optional SA33 tote kit  
(available for polyethylene carts only)*

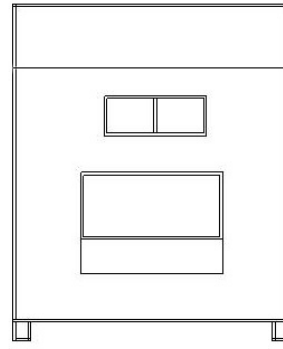
Howe <i>Mobile Express</i> ® Carts		
	Polyethylene Carts	Stainless-Steel Carts
Storage Capacity	Apprx. 200 lbs	Apprx. 212 lbs
Interior Volume	7 Cu. Ft.	7.88 Cu. Ft.
Interior Dimensions	19.5" W x 26"D x 25"H	20-3/4" W x 26-1/4" D x 25" H
Exterior Dimensions (Top Closed)	22" W x 34" D x 35-1/2" H	24-1/2" W x 33-1/2" D x 34-3/4" H
Exterior Dimensions (Top Open)	24.5" W x 34" D x 34-1/2"H	26-1/2" W x 33-1/2" D x 34-1/2" H
Empty Weight	76 lbs	134 lbs
Cart Top	Attached, double wall insulated roto cast	Attached double wall insulated stainless-steel
Cart Drain Assembly	Bronze body ball valve with stainless-steel ball	
Rear Wheel	10" with roller bearing	5" ball-bearing swivel
Rear Axle	Threaded locking hub	N/A
Front Wheel	5" lockable ball-bearing swivel	5" lockable ball-bearing swivel
Insulated Double Wall Construction	High density insulation	
Optional Totes	Set of 6 totes with base per cart. Each tote holds apprx. 15-18 pounds of ice.	N/A



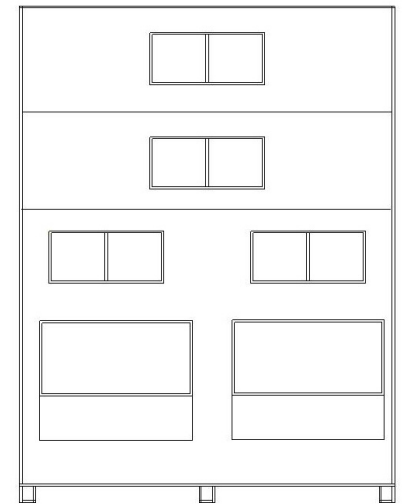
1000SS



1950SS



2700SS



4900SS

## UPRIGHT BINS

Model Number	Dimensions						Bin Interior Liner	For Use With Howe model Ice Flakers	Shipping Weight		Maximum Storage Capacity	
	Inches			Centimeters					Lbs.	kg.	Lbs.	kg.
	W	D	H	W	D	H						
1000SS	36	34	67	91	86	171	Poly	1000-RLE, 2000-RLE	295	134	788	358
1400SS*	48	34	67	122	86	171	Poly	2000-RLE	340	155	1079	490
1650SS*	60	34	55	152	86	140	Poly	2000-RLE	370	168	1071	486
1950SS	60	34	67	152	86	171	Poly	2000-RLE	410	187	1458	662
2300SS*	60	48	56	152	122	143	SS	4000-RL	580	264	1314	597
2700SS	60	48	67	152	122	1718	SS	4000-RL	860	391	1600	726
3800SS*	72	48	76	183	122	193	SS	6000-RL	890	405	3414	1550
4900SS	72	48	96	183	122	244	SS	6000-RL	1080	491	4008	1820

\* Not Shown Above

Upright bins are constructed with stainless-steel sides, top, and front with polyethylene or stainless-steel liners. Ice bin tops are structurally reinforced and insulated. Tops include a condensate drip pan (for RL model flakers only) and patented factory mounted ice level control boxes. The ice level controls are integrated into the ice bin top to insure proper alignment, provide greater protection, and external access to photo eyes.

# HOWE®



Howelce Mexico

EMAIL: [howeMX@howecorp.com](mailto:howeMX@howecorp.com)

Howe Corporation • 1650 North Elston Avenue, Chicago, Illinois 60642-1585

PHONE: (773) 235-0200 • FAX: (773) 235-0269

EMAIL: [howeinfo@howecorp.com](mailto:howeinfo@howecorp.com) • WEBSITE: <http://www.howecorp.com>

Howe Costa Rica

EMAIL: [howeCR@howecorp.com](mailto:howeCR@howecorp.com)