

Rapid Freeze High Ambient Air Cooled

Condensing Units

COOL SOLUTIONS SINCE 1912

HOWE Proven. Best Choice.

Howe's high ambient condensing units are sized and configured to match Howe Rapid Freeze ice flakers. These units are designed for unexcelled quality, reliability, and long life. They are durable, energy efficient and they provide a high degree of flexibility to a wide diversity of industrial applications.

STANDARD FEATURES

- High efficiency Copeland discus compressors with POE Oil.
- Thermally protected permanently lubricated ball bearing condenser fan motors.
- Electrical controls including compressor contactor and ice flaker interconnect wiring are located easily accessible control box with hinged cover.
- Head pressure control system
- Suction & liquid vibration eliminators.
- Liquid line filter-drier and sight glass.

SPECIAL FEATURES

- Contact points for remote pumpdown (Service pump-down).
- Suction Accumulator
- Oil Separator with oil return line.
- Separate high pressure, low pressure control switches
- Oversized condensing units rated for 110°F ambient conditions.

OPTIONAL FEATURES

- Coated condenser coils for harsh environments.

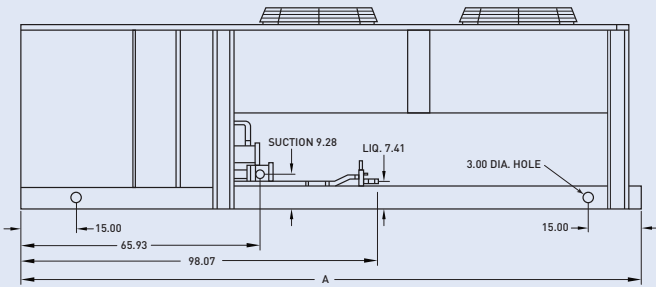


HA101-A-R404A-1 shown.

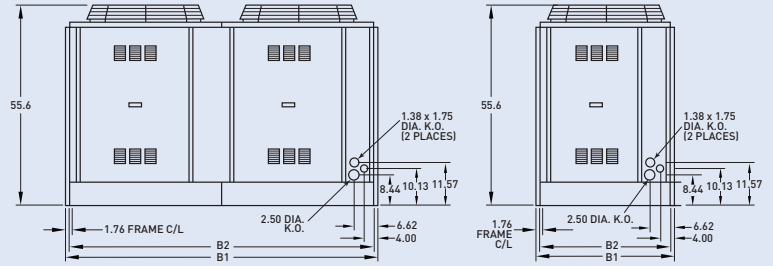


MADE IN USA!

SIDE VIEW



END VIEWS



CONDENSING UNIT

MODEL	DIMENSIONS IN				CM	CONNECTION SIZES			SHIPPING WEIGHT		
	A	B1	B2	H		A	B	H	SUCTION	LIQUID	LBS
HA51-A-R404A-*	144	44½	42½	55⅝	366	113	141	2⅛	7/8	1980	899
HA76-A-R404A-*	170.7	44½	42½	55⅝	434	113	141	2⅛	7/8	2370	1076
HA101-A-R404A-*	144	87	85	55⅝	366	224	141	2⅝	1⅛	3600	1635
HA102-A-R404A-*	144	87	85	55⅝	366	224	141	(2) 2⅛	(2) 7/8	3600	1635

*= 1 for 230/3/60, 2 for 380/3/50, 3 for 460/3/60, 4 for 575/3/60

ELECTRICAL R-404A

VOLTAGE	MODEL	COMPRESSOR		CONDENSER FAN MOTORS		UNIT	
		RLA	LRA	QUANTITY	FLA (EACH)	MCA	MOP
208-230/3/60	HA51-A-R404A-1	66	374	2	8.0	80.0	125
	HA76-A-R404A-1	95.6	470	2	14.0	121	200
	HA101-A-R404A-1	66 x 2	374 x 2	4	16.0	145.8	200
460/3/60	HA51-A-R404A-3	33	187	2	4.0	40.0	60
	HA76-A-R404A-3	47.8	235	2	7.0	61.0	100
	HA101-A-R404A-3	33 x 2	187 x 2	4	8.0	72.	100

Electrical specs for HA102-A-R404A-* are same as HA101-A-R404A-*. the HA102-A-R404A-* has two separate refrigeration circuits. Suction accumulator is provided with Howe furnished condensing unit.

