

Rapid Freeze

Moderate Ambient Air Cooled

Condensing Units

COOL SOLUTIONS SINCE 1912

HOWE Proven. Best Choice.

Howe's moderate ambient condensing units are sized and configured to match Howe Rapid Freeze ice flakers. These units are designed for unexcelled quality, reliability, and long life. They are durable, energy efficient and they provide a high degree of flexibility to a wide diversity of industrial applications.

STANDARD FEATURES

- High efficiency Copeland discus compressors with POE Oil.
- Thermally protected permanently lubricated ball bearing condenser fan motors.
- Electrical controls including compressor contactor and ice flaker interconnect wiring are located easily accessible control box with hinged cover.
- Head pressure control system
- Suction & liquid vibration eliminators.
- Liquid line filter-drier and sight glass.

SPECIAL FEATURES

- Contact points to connect with flaker control panel to monitor low oil pressure, high discharge pressure, low suction pressure (pump-down), and compressor running conditions.
- Suction Accumulator
- Oil Separator with oil return line.
- Separate high pressure, low pressure control switches

OPTIONAL FEATURES

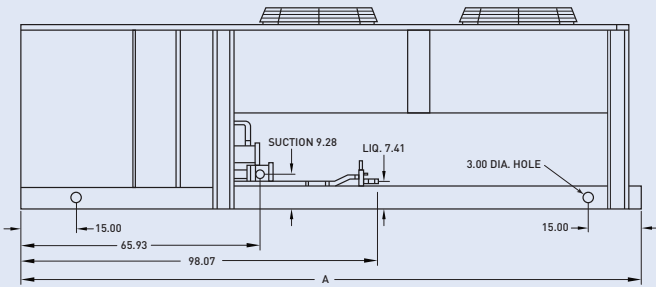
- Coated condenser coils for harsh environments.
- Oversized condensing units rated for 110°F ambient conditions.



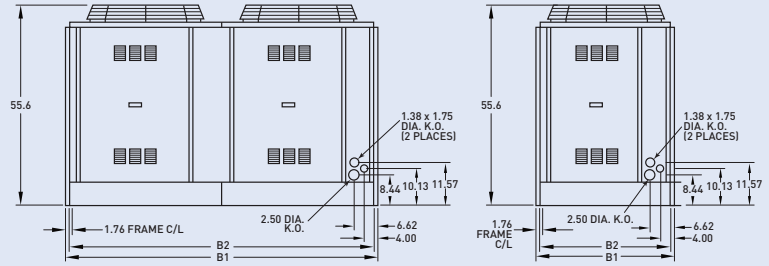
101-RHS-AC shown.



SIDE VIEW



END VIEWS



CONDENSING UNIT

MODEL	DIMENSIONS IN				CM	CONNECTION SIZES			SHIPPING WEIGHT		
	A	B1	B2	H		A	B	H	SUCTION	LIQUID	LBS
MA51-A-R404A-*	144	44½	42½	55⅝	366	113	141	2⅛	7/8	1980	899
MA76-A-R404A-*	170.7	44½	42½	55⅝	434	113	141	2⅛	7/8	2370	1076
MA101-A-R404A-*	144	87	85	55⅝	366	224	141	2⅝	1⅛	3600	1635
MA102-A-R404A-*	144	87	85	55⅝	366	224	141	(2) 2⅛	(2) 7/8	3600	1635

* Models MA51 & MA76-RHS have single rows of fans

ELECTRICAL R-404A

VOLTAGE	MODEL	COMPRESSOR		CONDENSER FAN MOTORS		UNIT	
		RLA	LRA	QUANTITY	FLA (EACH)	MCA	MOP
208-230/3/60	MA51-A-R404A-1	52.6	278	2	8.0	67.0	110
	MA76-A-R404A-1	80.8	450	2	14.0	104.5	175
	MA101-A-R404A-1	52.6 x 2	278 x 2	4	16.0	122.2	150
460/3/60	MA51-A-R404A-3	26.3	139	2	4.0	34.0	50
	MA76-A-R404A-3	40.4	225	2	7.0	52.0	80
	MA101-A-R404A-3	26.3 x 2	139 x 2	4	8.0	61.1	80
575/3/60	MA51-A-R404A-6	20.9	113	2	5.0	28.1	45
	MA76-A-R404A-6	32.5	172	2	6.0	42.1	70
	MA101-A-R404A-6	20.9 x 2	113 x 2	4	3.0	71.0	90
380/3/50	MA51-A-R404A-2	33.0	187	2	8.0	40.0	60
	MA76-A-R404A-2	47.8	235	2	14.0	61.0	100
	MA101-A-R404A-2	33.0 x 2	187 x 2	4	8.0	145.8	200

Electrical specs for 102-RHS are same as 101-RHS. 102-RHS has two separate refrigeration circuits. Suction accumulator is provided with Howe furnished condensing unit.

