

Rapid Freeze

RECIRCULATED AMMONIA

Selective Purpose Ice Flaker

COOL SOLUTIONS SINCE 1912

HOWE Proven. Best Choice.™

Rapid Freeze Recirculated Ammonia ice flakers feature unexcelled quality, reliability, and long life. It is durable, energy efficient and provides a high degree of flexibility to a wide diversity of industrial applications.

RELIABILITY An ice machine you can always depend on. It's backed by over a half-century of innovation and proven performance.

DURABILITY Internal stainless steel components include: shaft, ice blade, ice deflector and brackets, squeegee wrapper and brackets. NO galvanized parts inside ice flaker.

HIGH QUALITY ICE Super-cold, dry, crisp, 100% sub-cooled ice with greater surface area and exceptional cooling power. Draws heat away quickly and evenly for superb process cooling applications.

FLEXIBILITY A diversity of refrigerants, electrical options and condenser configurations are available to meet any need.

LOW MAINTENANCE

Substantially lower maintenance requirements than most other brands of ice equipment.

ENERGY-EFFICIENT Requires significantly less energy per pound of ice produced than most other brands of ice equipment.

APPLICATIONS

- Produce Harvesters
- Produce Wholesalers
- Industrial Bakeries
- Seafood Processors
- Seafood Distributors
- Meat Processors
- Sausage Processors
- Poultry Processors
- Concrete Cooling
- Industrial Catering

TWO PACKAGES TO CHOOSE FROM:

STANDARD PACKAGE INCLUDES:

- Photo eye ice level control
- Liquid Line Strainer
- Relief valve
- Low water cut out

PREMIUM PACKAGE INCLUDES:

- Includes above plus:
- Low ambient kit
- NEMA4-TEFC wash down



6000-RLR shown.

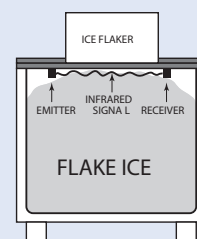


100% ICE PRODUCTION/24HRS

REMOTE MODEL	LBS	KG
2000-RLR	2,000	908
3000-RLR	3,000	1,362
4000-RLR	4,000	1,816
6000-RLR	6,000	2,724
51-RLR	10,000	4,540
76-RLR	15,000	6,810
101-RLR	20,000	9,080

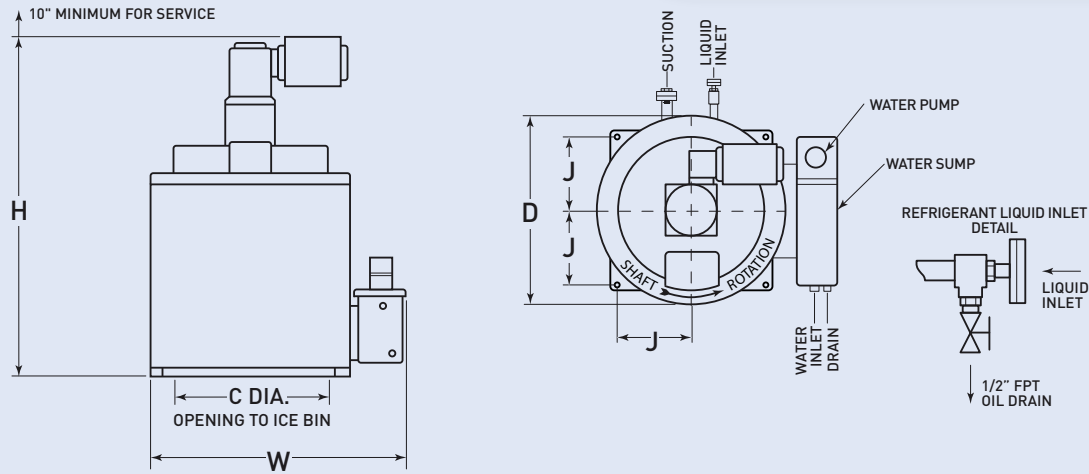
* All data given at 90°F (21°C) air / 70°F (21°C) water.

PATENTED BIN ICE LEVEL CONTROL SYSTEM For maximum bin storage, infrared control turns machine off when ice level reaches chute.



RECIRCULATED AMMONIA

Selective Purpose Ice Flaker



MODEL	DIMENSIONS (IN) (CM)					APPROX SHIPPING WEIGHT	CONNECTION SIZES					PRODUCTION		WATER	REFRIGERATION REQUIREMENT *		H _{N3} RECIRC RATE	Approx. AMMONIA CHARGE	
	C	D	H	J	W		LBS	KG	SUCTION	LIQUID	OIL DRAIN	RELIEF VALVE	WATER		LBS	KG			G.P.M.
2000-RLR	14	23	34	8½	29½	400	1	½	½	½	3/8	2,000	908	.17	18,000	4,540	3:1	8	
	35.6	58.4	86.4	21.6	74.9	181.6													
3000-RLR	14	23	38½	8½	29½	450	1	½	½	½	3/8	3,000	1,362	.24	27,000	6,810	3:1	12	
	35.6	58.4	97.8	21.6	74.9	204.3													
4000-RLR	18	27½	43	10¼	31½	550	1¼	½	½	½	3/8	4,000	1,816	.35	36,000	9,070	3:1	15	
6000-RLR	18	27½	50	10¼	35½	720	1½	¾	½	½	3/8	6,000	2,724	.50	54,000	13,610	3:1	22	
51-RLR	30	30	60	16¼	57	1500	2	¾	½	½	½	10,000	4,540	.85	90,000	22,680	3:1	75	
76-RLR	30	30	72	16¼	57	2100	2	¾	½	½	½	15,000	6,810	1.25	135,000	34,020	3:1	125	
101-RLR	30	30	79	16¼	57	2500	2½	1	½	½	½	20,000	9,080	1.65	180,000	45,360	3:1	150	

ELECTRICAL

MODEL	230/1/60						460/3/60						380/3/50**					
	DRIVE MOTOR HP	WATER MOTOR FLA	MIN PUMP HP	FLA	DRIVE CIRCUIT AMPS	WATER MAX FUSE	MIN MOTOR HP	FLA	DRIVE PUMP HP	CIRCUIT FLA	WATER MAX AMPS	MIN MOTOR FUSE	PUMP HP	CIRCUIT FLA	MAX HP	FLA	AMPS	FUSE
2000-RLR	1/3	3.2	—	.7	5	15							1/3	1.2	—	.7	3	15
3000-RLR	1/3	3.2	—	.7	5	15	NOT AVAILABLE						1/3	1.2	—	.7	3	15
4000-RLR	1/3	3.2	—	.7	5	15	NOT AVAILABLE						1/3	1.2	—	.7	3	15
6000-RLR	1/2	4.3	—	.7	8	15	NOT AVAILABLE						1/2	1.5	—	1.95	5	15
51-RLR	1	6.8	1/8	1.05	15	20	1	1.8	1/6	.35	5	15	1	2.4	1/8	1.1	7	15
76-RLR	1	6.8	1/8	1.05	15	20	1	1.8	1/6	.35	5	15	1	2.4	1/8	1.1	7	15
101-RLR	1	6.8	1/8	1.05	15	20	1	1.8	1/6	.35	5	15	1	2.4	1/8	1.1	7	15

Standard NEMA 1 control panel is shipped loose for field installation. (Optional NEMA4 enclosure is available with NEMA4/TEFC kit) Drive motor is standard ODP (open drip proof) (TEFC motor is available with optional NEMA4/TEFC kit). Rapid Freeze ice flakers require a condensation drip pan to be fabricated and installed under flaker, but above the storage bin. Drip pan shall be constructed to prevent condensation from entering ice storage bin. ** 380/3/50 drive motor, 220/1/50 water pump

Accessories included with the ice flaker as standard are: Safety relief valve, liquid line strainer, control panel, & companion flanges. Optional valve accessory kits include: liquid line solenoid valve, dual pressure regulator, hand expansion valve, suction stop, liquid stop & oil drain valves.



1650 N. Elston Ave., Chicago, IL 60642-1585 | 773 235 0200 | Fax 773 235 0269
 howecorp.com | howeinfo@howecorp.com

